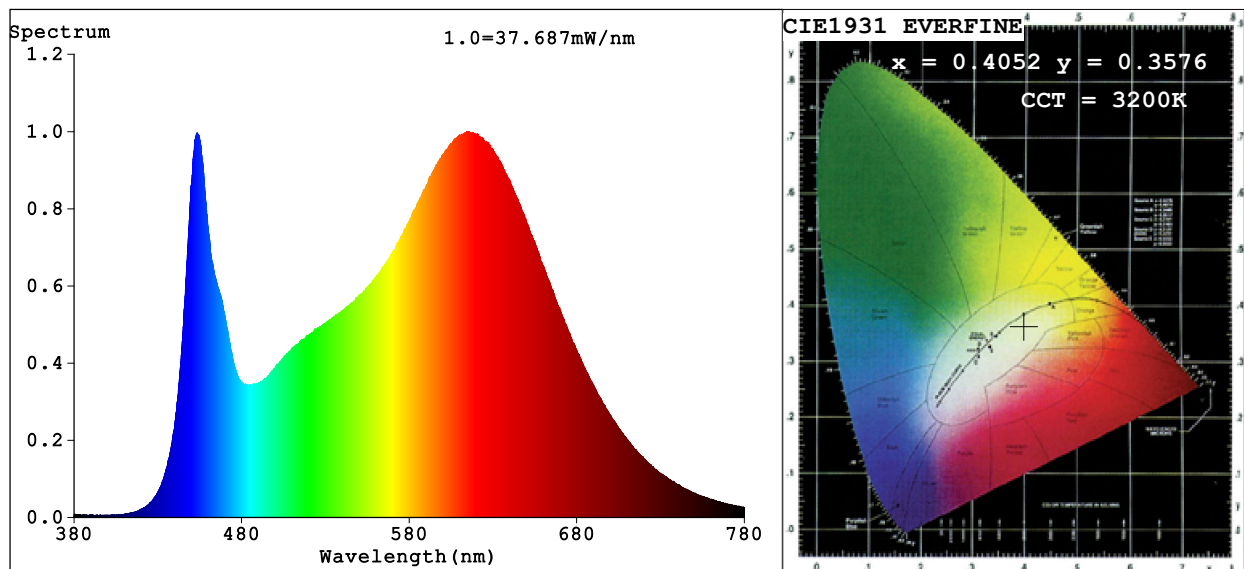


Spectrum Test Report



Color Parameters:

Chromaticity Coordinate: $x=0.4052$ $y=0.3576$ $u'=0.2501$ $v'=0.4966$

CCT=3200K (Duv=-0.0151) Dominant WL:Ld =591.2nm Purity=28.9%

Ratio:R=24.8% G=70.9% B=4.3%; Peak WL:Lp=614.3nm FWHM=144.9nm

Render Index:Ra=90.6 CRI=89.0 TM30:Rf=88 Rg=104

R1 =97 R2 =92 R3 =90 R4 =94 R5 =96 R6 =86 R7 =86

R8 =83 R9 =73 R10=87 R11=95 R12=75 R13=95 R14=96 R15=99

Photo Parameters:

Flux = 1816 lm Eff. : 113.32 lm/W Fe = 6.581 W Scotopic:3012.5 S/P:1.6585

Electrical parameters:

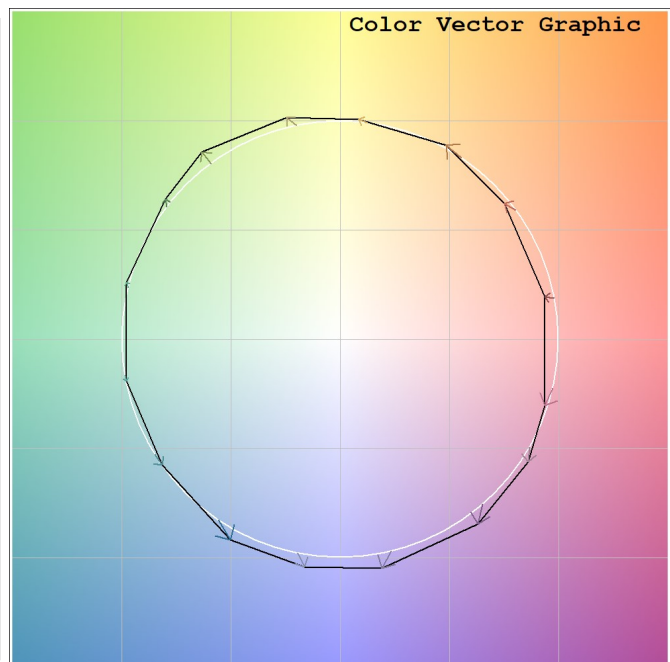
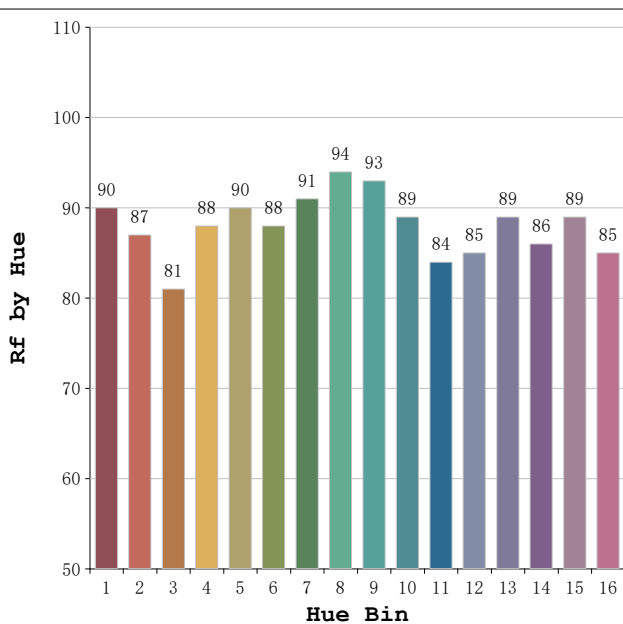
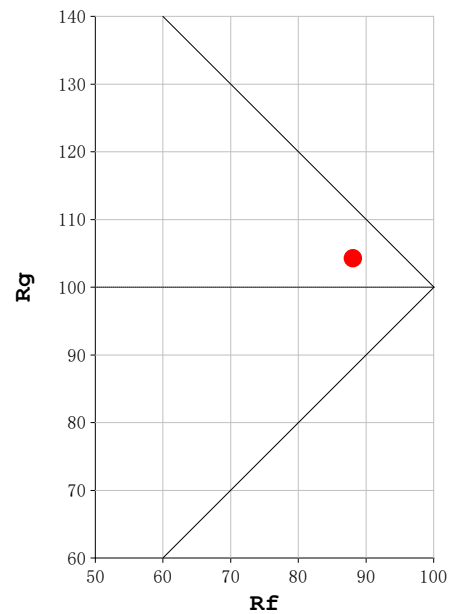
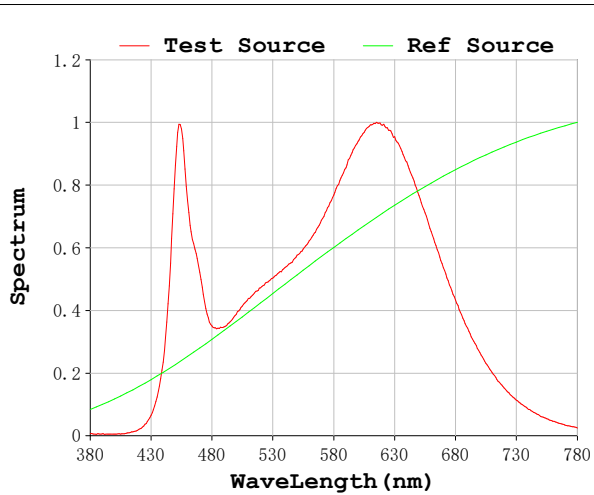
V = 23.998 V I = 0.6679 A P = 16.03 W PF = 1.000

Status: Integral T = 512 ms Ip = 37370 (57%)

Model:Ecoled Hierro 3200K
Tester:Sergio Carneros
Temperature:23Deg
Manufacturer:Luz Negra S.L

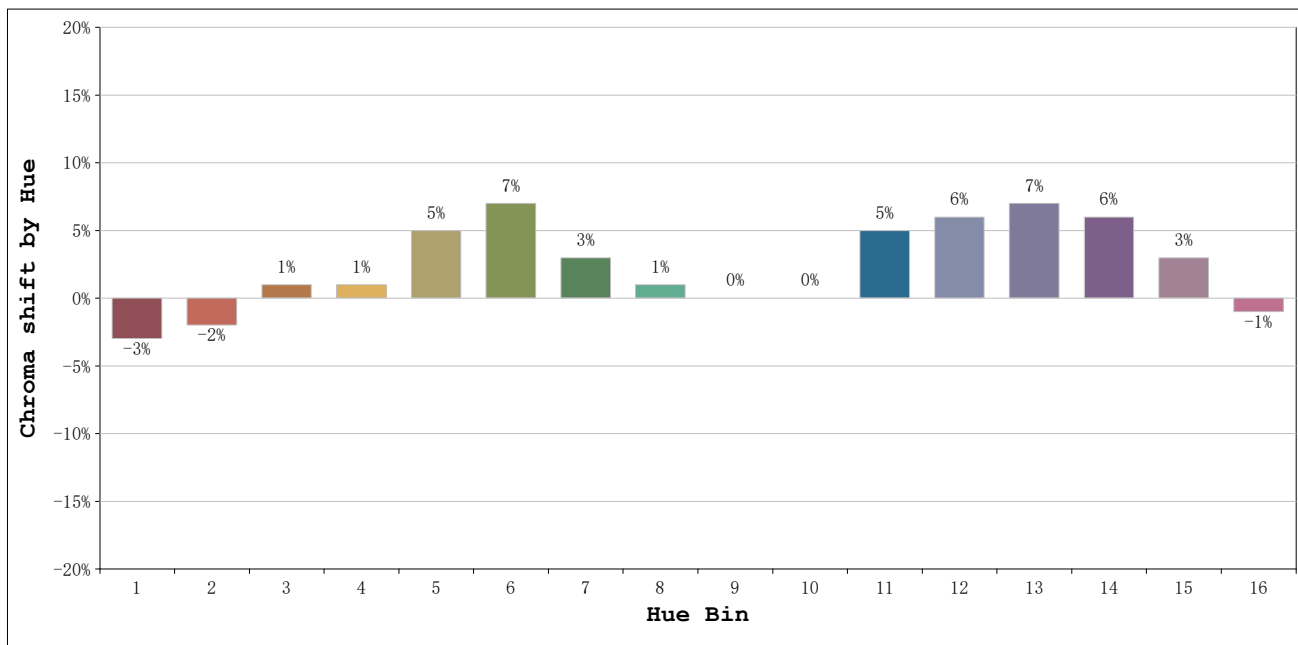
Number: 33.012
Date:2023-10-03 10:13:10
Humidity:53%
Remarks:100cm de tira flexible

Rf: 88 **CCT: 3200 K** **u': 0.2501**
Rg: 104 **Duv: -0.0151** **v': 0.4966**



Model:Ecoled Hierro 3200K
 Tester:Sergio Carneros
 Temperature:23Deg
 Manufacturer:Luz Negra S.L

Number: 33.012
 Date:2023-10-03 10:13:10
 Humidity:53%
 Remarks:100cm de tira flexible



			Graphic shift(%)	
Hue Bin	Hue Angle	Rf	Chroma	Hue
1	0.0° - 22.5°	90	-3	1
2	22.5° - 45.0°	87	-2	5
3	45.0° - 67.5°	81	1	9
4	67.5° - 90.0°	88	1	4
5	90.0° - 112.5°	90	5	4
6	112.5° - 135.0°	88	7	0
7	135.0° - 157.5°	91	3	-2
8	157.5° - 180.0°	94	1	-1
9	180.0° - 202.5°	93	0	3
10	202.5° - 225.0°	89	0	6
11	225.0° - 247.5°	84	5	10
12	247.5° - 270.0°	85	6	4
13	270.0° - 292.5°	89	7	-5
14	292.5° - 315.0°	86	6	-6
15	315.0° - 337.5°	89	3	-5
16	337.5° - 360.0°	85	-1	-8

Model:Ecoled Hierro 3200K
 Tester:Sergio Carneros
 Temperature:23Deg
 Manufacturer:Luz Negra S.L

Number: 33.012
 Date:2023-10-03 10:13:10
 Humidity:53%
 Remarks:100cm de tira flexible